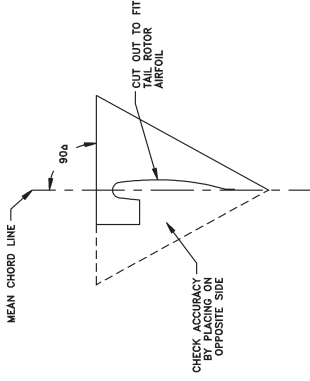
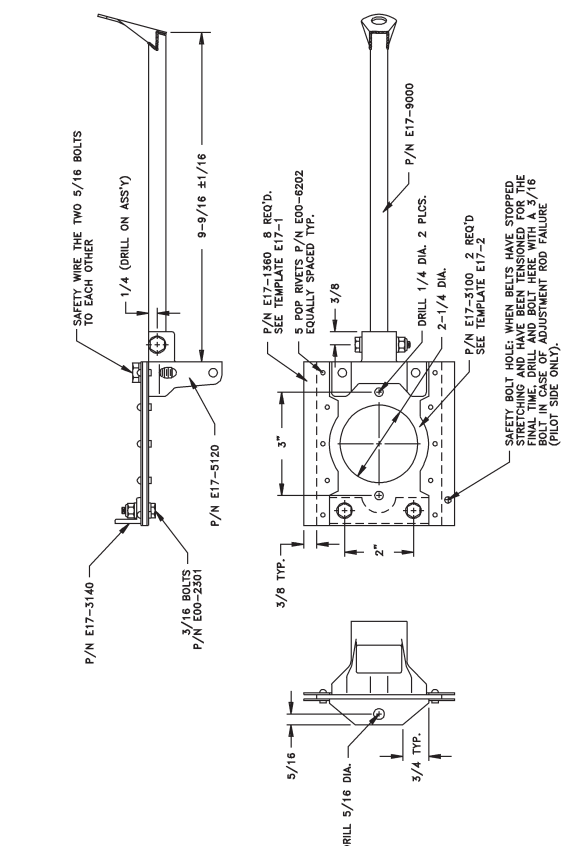


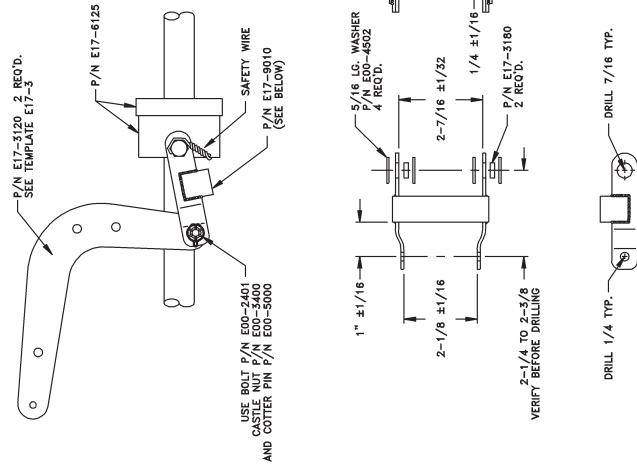
PITCH SETTING

1. PLACE ARM IN FULL NEGATIVE POSITION.
2. KEY SHOULD EXTEND 1/4 TO 5/16 INCH.
3. ADJUST EACH PITCH LINK TO 6 DEGREES SECOND BLADES TO 180 DEGREES TO CHECK EACH OTHER.
4. ADJUST BOTH BLADES AS CLOSE AS POSSIBLE TO 180 DEGREES PITCH (WITHIN 1/2 TURN ON PITCH LINK).
5. AFTER ADJUSTMENTS ARE MADE, CHECK TO ENSURE FULL RIGHT PEDAL WILL GIVE 24 DEGREES POSITIVE PITCH.



PITCH CHECKING TEMPLATE

MAKE FROM 1/2 TO 3/4 INCH THICK WOOD

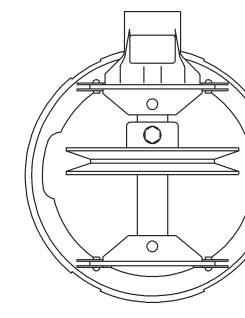


SNAP RING INSTALLATION

INSTALL SNAP RINGS (ONE INNER AND TWO OUTER) ON THE ROTOR BARREL. THE RETAINER AND SHARP EDGES FACING OUTWARD. ORIENT SNAP RING ENDS 90 DEGREES FROM THE OTHER ROTATION AND 180 DEGREES FROM EACH OTHER.

INSTALLATION AND REMOVAL OF SNAP RINGS MUST BE PERFORMED USING SUITABLE PLIERS. USE OF ONE OR BOTH TAIL ROTOR BLADES, SNAP RINGS OR GROOVE, RESULTING IN LOSS OF ROTOR BALANCE. Pliers: MILBARK 4495; NEW BRITAIN P67, OR K-D 445.

NOTE: INSTALL TAIL ROTOR BARREL ONTO SHAFT BEFORE INSTALLING PITCH PINS.



TIP CAP INSTALLATION

COMPLETE BALANCING OPERATION CAP BEFORE ALUMINUM CAP INSTALLATION. P/N E00-6200. PER TIP SPACE AS SHOWN (EXACT LOCATION NOT CRITICAL).